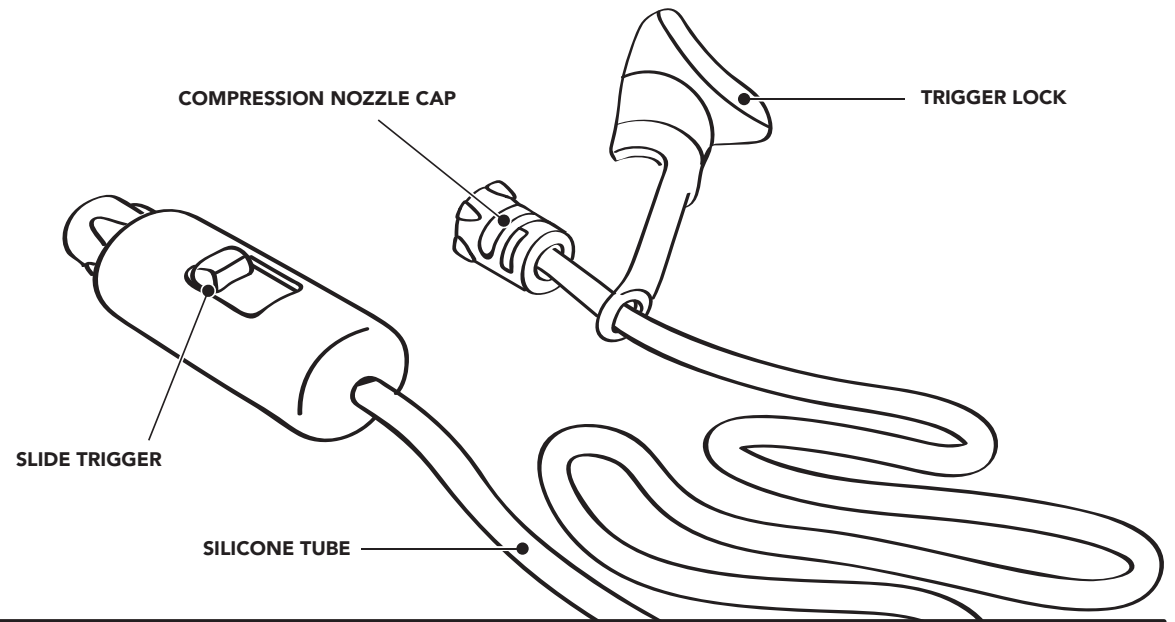


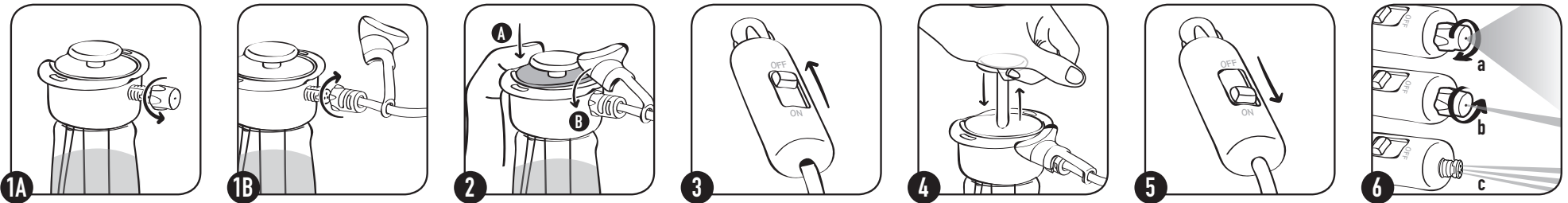
# HYDRATION SPRAY TUBE

## TRANSFORM YOUR LUNATEC BOTTLE

Tube easily converts any Lunatec bottle into a hydration spray bladder for convenient cooling, cleaning and drinking.



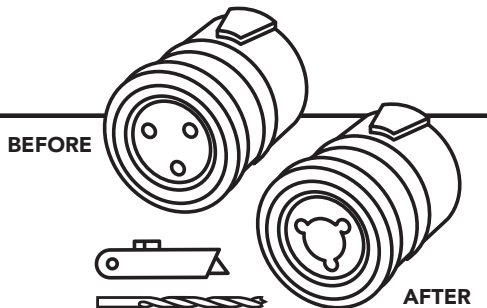
## DIRECTIONS FOR USE



1. Remove the nozzle cap from the spray bottle lid (A) and replace it with the Tube compression nozzle cap (B).
2. Depress the trigger on the lid (A) and snap the trigger lock into place as shown (B).
3. Double check that the Tube slide trigger is in off position before pressurizing the hydration spray bottle.
4. Pump up your spray bottle.
5. Slide the slide trigger into the on position.
6. Adjust the nozzle cap for mist, stream and shower modes.

### TIP

We have included an extra soft nozzle. To maximize pressure and flow through Tube we suggest you drill a 1/8 inch hole through the extra soft nozzle or use a knife and cut a whole by connecting the three shower holes. Then swap it with the soft nozzle in your hydration spray lid when using Tube.



## MAINTENANCE

- Store with the slide trigger in the on position to aid in air flow.
- Clean by spraying warm to hot soapy water through the entire system.
- Replacement parts are available at [lunatecgear.com](http://lunatecgear.com).

## ! WARNINGS

- Do not over-pressurize the unit.
  - Do not use liquids with temperatures above 120°F/49°C.
  - **CHOKING HAZARD** Unit contains small parts. Not suitable for children under 3 years.
  - Only use hydration spray lids with Lunatec bottle bases.
  - Do not use lid on any metal or glass bases.
- FAILURE TO READ AND FOLLOW THE ABOVE WARNINGS AND OPERATING INSTRUCTIONS COULD LEAD TO SERIOUS BODILY INJURY.**